



RESTAURANT FLORIAN (AT THE PARKHOTEL)

Leonhardstraße 8 (Meranpark)

8010 Graz

T +43 316 36 30-0

F +43 316 36 30-50

office@parkhotel-graz.at

www.florian-graz.at

Excellent dishes, elegant atmosphere and absolute peace and quiet - and that in the very center of Graz - the Restaurant and Café Florian in Styria with its idyllic garden of roses, is a charming place to linger, and not only for city tourists, far away from the hustle and bustle of the city and the sightseeing.

The Florian's excellent reputation extends far beyond the borders of Graz, as a very fine venue where the culinary dreams of gourmets come true. The perfect harmony between professional service in fine dining and elegant ambiance give the Restaurant Florian its exquisite flair and puts it in a class of its own in Graz.

ACCESSIBILITY

Public Transport

Please use the route planner of Verbundlinie Steiermark:

<https://verkehrsauskunft.verbundlinie.at/>

Parking

- parking spaces belonging to Parkhotel (access via Mayffredygasse 12)
- Barrier opens after ticket is pulled, control elements higher than 110 cm (norm 80 - 100 cm)
- One barrier-free parking space (near the barrier-free rear entrance), clearly marked on the ground (no sign-board)
- Level surface, easily rollable flooring
- Not parallel to the roadway
- Parking space **not 350 cm wide**, but adjacent space can be blocked if needed
- Parking meter: **only 150 x 99 cm space** in front of the machine, **control element height 102 - 140 cm** (norm 80 - 110 cm), **not accessible from below**

ENTRANCE

The Restaurant Florian has an own entrance at the corner Leonhardstraße/ Maiffredygasse (it is not the hotel entrance).

Access from the Street (Wind Lobby)

- Access level and easily rollable (asphalt)
- Covered entrance and free from obstacles
- 1st door: swinging door with at least 90 cm passage width; **1.5 cm threshold** (on one side)
- Door **very hard to open**; door handle at standard height
- Maneuvering space on both sides of the door at least 150 cm
- 2nd door: **pendulum door** with at least 90 cm passage width; closing mechanism prevents swinging through
- Two-winged, walking wing at least 80 cm wide; horizontal door pulling handle
- **Not easy to open**; no threshold
- Maneuvering space on both sides of the door at least 150 cm
- Lateral approach area of 50 cm next to the door handle on both sides of the door
- Door handle at standard height; dirt trap mat easily rollable

Access from Parking

- Access to entrance max. 6% longitudinal slope, **up to 7% transverse slope** (norm max. 2%)
- Covered and threshold-free entrance
- Door opening button and card reader **at 114 and 120 cm height** (norm max. 110 cm), not needed during opening hours
- Wind lobby with automatic sliding doors, passage width at least 90 cm
- Outer door opens prematurely and closes with a delay, **inner door opens late**
- Approach area on both sides of the doors 150 x 120 cm
- Well-rollable dirt trap mat or grating outside, **carpet inside has waves**



Entrance to the restaurant



Access from the parking

RESTAURANT

- Tables are accessible underneath in all rooms (80 cm width, 70 cm underfitted height); underfitted depth mostly **less than 60 cm** due to the central foot
- Seating with stable arm and backrests, seat height 46 - 50 cm
- Clear passage width of main aisles at least 100 cm
- also tables with glare-free lighting and with sufficient noise reduction available
- restaurant area not free from **dust-prone upholstered furniture and curtains**
- Staff trained in food allergies
- Offers for food allergy sufferers possible upon request
- Menu **not in large and contrasting font**
- Coat rack: clothes hanger or hooks **too high** (170 cm instead of max. 120 cm)

BAR

- 2 steps: **18** and 16 cm high, at least 30 cm deep, at least 120 cm wide, marked on the front edge
- Handrail **higher than 90 cm**, safe to grasp
- Steps can be bypassed using a ramp
- **Ramp 114 cm wide** (standard at least 120 cm), straight, **longitudinal gradient 8.5 - 9%**
- Movement area of at least 150 x 150 cm at the beginning and end of the ramp
- Handrail on one side, **95 cm high** (standard max. 90 cm), can be safely grabbed

© Parkhotel Graz



Bar



Restaurant

Outdoor garden

OUTDOOR GARDEN:

- Reachable via the hotel (see also „Access from Parking“““)
- **Garden terrace not accessible for wheelchair users due to gravel**

GENERAL WHEELCHAIR ACCESSIBLE RESTROOM (1ST FLOOR)

- Accessible by elevator; unisex
- Swinging door with 90 cm passage width, threshold-free
- Approach area of 200 x 150 cm on the opening side of the door
- Approach area of 150 x 120 cm **not available** on the closing side of the door (**only 92 cm width**)
- Door handle at standard height (85 and 110 cm), easy to open
- 50 cm lateral approach area next to the door handle on the opening side, **not on the closing side**
- Door opens outward, can be unlocked from the outside in an emergency
- Maneuvering space of 150 x 150 cm guaranteed in the restroom

Toilet

- Turning space in front of the toilet **smaller than 120 cm x 120 cm** (only 30 cm to the sink)
- Toilet height 48 cm, **short toilet bowl, no back support**
- Toilet approachable from the left, free space at least 90 cm
- Left folding support rail (easy to use), right angled grip; at standard height
- Support bars extend at least 15 cm beyond the front edge of the toilet
- Toilet paper within reach of the folding support rail; **flush not easily reachable from sitting on the toilet**

Sink

- Maneuvering space in front of the sink 150 x 150 cm
- Sink height between 80 and 85 cm
- Free height under the sink at least 70 cm, flat plastic drain trap
- Sink can be approached on a width of 100 cm
- Single lever faucet, distance to the front edge of the sink 20 - 35 cm

Other

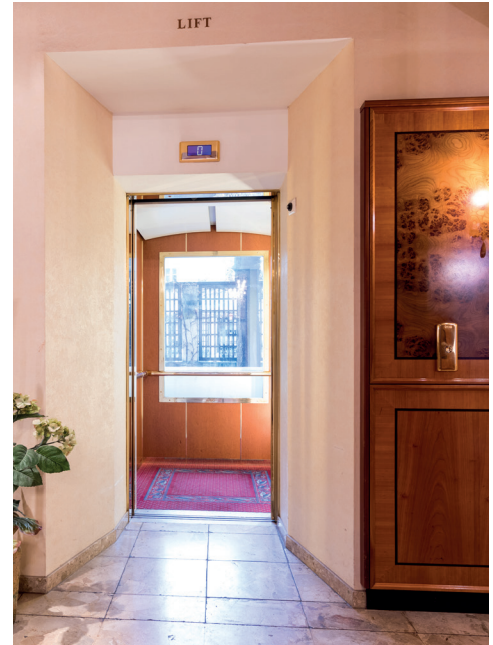
- Bottom edge of the mirror at **107 cm height** (norm maximum 95 cm)
- Operating level of equipment at standard height
- **No emergency bell** present
- Foldable changing table available in the restroom



Accessible toilet

ELEVATOR

- Accessible without thresholds, door clearance 88 cm
- Doors open and close automatically, light barriers at a maximum height of 100 cm
- Minimum 150 x 150 cm maneuvering space when entering and exiting
- No downward staircase opposite the elevator door
- Car width at least 110 cm, depth at least 140 cm
- Push buttons at standard height, tactilely detectable inside **(but not outside)**
- Pressing the buttons is visually confirmed, **but not acoustically**
- **no audible signal or announcement when the lift arrives**
- Handrail available
- Mirror available, **but not opposite the exit**



Elevator

ADDITIONAL INFORMATION

- Evacuation plan for people with disabilities in place
- Service dogs allowed
- Changing table available in the general accessible restroom

As of March 2022

All information without guarantee