



RESTAURANT SCHLOSSBERG

Schlossberg 7
 8010 Graz
 T +43 316 840000
office@schlossberggraz.at
www.schlossberggraz.at

The multifaceted *Schlossberg* restaurant is situated at the highest point of Graz. Whether you arrive by the funicular railway, the Schlossberg lift or on foot – enjoy the breathtaking views. Christof Widakovich presents innovative Styrian specialties in the panorama restaurant and in what may well be the best outdoor dining area in Graz. The beer garden, with regional delicacies, freshly drawn beer and Styrian wine being available, invites visitors to relax. High above the rooftops in the *Schlossberg* bar, with its own roof terrace, is where to experience international flair.

ACCESSIBILITY

Schlossbergbahn funicular railway (see individual description) from Kaiser-Franz-Josef-Kai 38

Accessibility by public transport

Please use the route planner of the Styria Public Transport Network (Verbundlinie Steiermark): <https://verkehr-sauskunft.verbundlinie.at/>

Parking

- A disabled parking space is located just opposite the entrance to the Schlossberg funicular railway
- Short-stay parking zone along the Kaiser-Franz-Josef-Kai
- Schlossberg multi-storey car park, Sackstraße 29, approx. 70 m to the Schlossberg funicular railway
- Kastner & Öhler car park (lift) at Marburger Kai, approx. 400 m to the Schlossberg funicular railway

ENTRANCE AREA

- The restaurant is located next to the top station of the Schlossberg funicular railway. Level path over large, flat paving stones to the entrance of the restaurant and bar
- Hinged door with bar handle
- Clear door width 115 cm
- Step-free entrance



Entrance to restaurant



Tables in restaurant

INTERIOR AREA

- Swing door to restaurant area, with bar handle
- Clear door width 93 cm
- Tables and chairs movable
- Lower edge of tabletop 70 cm
- Tables with centre table leg with beam

ACCESSIBLE TOILET

- Toilets in the reception area of the restaurant
- Hinged door with lever handle
- Clear door width 90 cm
- Dimensions: 200 x 180 cm
- WC height 52 cm
- WC accessible from the right (113 cm of space)
- Handrails at a height of 85 cm
- Washbasin at a height of 85 cm



WC in restaurant



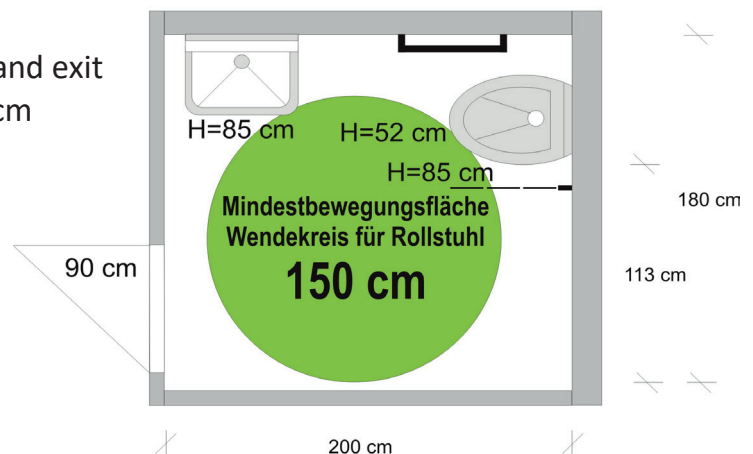
Washbasin in restaurant

LIFT (TO BAR ON THE UPPER FLOOR)

- Is located just to the right after the main entrance
- Clear door width 90 cm
- Width 105 cm/depth 140 cm
- 2 cm step at the top exit
- At least 150 x 150 cm space at entry and exit
- Controls in the lift at a height of 100 cm (buttons with relief lettering)
- Emergency bell
- Visual floor display

BAR ON THE UPPER FLOOR

- Accessible with the lift
- 2 cm step at lift exit
- Swing door to the bar
- Clear door width 110 cm
- Tables and chairs movable
- Table height 70 cm
- A few fixed benches, some bar tables with bar stools
- Terrace of the *Schlossberg* bar accessible via a very wide glass sliding door
- Terrace suitable for wheelchairs
- Tables same as the interior



WC layout plan

OUTDOOR DINING AREA OF RESTAURANT

- In general, the outdoor dining area is only accessible by wheelchair from outside, i.e. not from the restaurant premises.
- Tables in the outdoor dining area are on a raised platform. On one side, closer to the restaurant, there is a short, mobile and very steep ramp which is very difficult to manage without help.
- On the other side (towards the beer garden), however, a level access point has been created (135 cm wide).
- Terrace with wooden boards suitable for wheelchairs.
- Tables and chairs movable
- Table height 70–72 cm
- Partly central feet, partly 4 feet

BEER GARDEN

- Adjacent to the outdoor dining area
- Self-service!
- Access via a wide, concrete ramp with a downwards slope of approx. 9 %
- Space at start and end of ramp 1.50 x 1.50 m
- Handrail on the right (viewed from above)
- Handrail at a height of 100 cm
- Beer garden has fine gravel
- Tables and chairs movable
- Table height 70 cm
- Because of the bars (folding table), there is no under-table wheelchair access, sideways access only



Entrance to bar on upper floor



Interior of bar on upper floor



Terrace of bar on upper floor



Access to beer garden and terrace



Terrace

DISABLED TOILET IN THE BEER GARDEN

- Toilet next to the self-service counter at the top of the ramp
- Eurokey lock system (key can be borrowed from the bar)
- Hinged door with turning door knob
- Clear door width 90 cm
- Length 225 cm/width 162 cm
- WC height 49 cm
- WC accessible from left
- No handrails
- Washbasin at a height of 84 cm
- Baby changing table available

ADDITIONAL INFO

- Guide dogs allowed
- Baby changing table in the restaurant by the ladies toilets and by the accessible toilet in the beer garden (Eurokey can be borrowed from the bar)
- Staff happy to read menu to blind people
- 2 seminar rooms

Validity: April 2012, errors and omissions excepted,
 Graz Tourism in cooperation with
 Hartberg Disability Support Group



Mobile ramp on terrace



Connection between beer garden and terrace



Beer garden self-service area



Beer garden ramp, tables



Beer garden washbasin, WC

