



MUR ISLAND CAFÉ

Lendkai 19
 8020 Graz
 T +43 316 822 660
cafe@murinselgraz.at
https://murinselgraz.at/de/cafe_de/

Small island, great ideas. To chime in with the ethos of Mur Island, the island is also home to a café, which is a great place to relax in the midst of impressive architecture. Equidistant from both of the river banks, a coffee or a glass of sparkling wine is always a good idea, often accompanied by delicious cakes and strudel. As a meeting place or a starting point for a long walk around town, a variety of refreshments and regional snacks are also available to those visiting the island. And because exciting design is also obligatory, free events also attract cultured visitors to the hotspot in the heart of the city.

ACCESSIBILITY

Parking

- Short-stay parking zone at Lendkai and Kaiser-Franz-Josef-Kai
- Kunsthaus car park at Lendkai, approx. 300 m to the ramp access to Mur Island
- Kastner & Öhler car park at Kaiser-Franz-Josef-Kai, approx. 100 m to the lift to Mur Island

Accessibility by public transport

Please use the route planner of the Styria Public Transport Network (Verbundlinie Steiermark):
<https://verkehrs Auskunft.verbundlinie.at/>

ACCESS

- Access asphalted
- Access from Lendkai via ramp with incline of between 6 and 10 %
- Access from Kaiser-Franz-Josef-Kai via lift and ramp with incline of between 6 and 10 %



Access

GLASS LIFT (KAISER-FRANZ-JOSEF-KAI)

- At least 150 x 150 cm space in front of entry and exit
- Clear door width 90 cm
- Depth 140 cm, width 110 cm
- Control panel at height of 95 cm with Braille lettering
- “2” = access to the street level, “1” = access to Mur Island and public accessible WC (with Eurokey), “0” = Mur Promenade
- Visual floor display (**but difficult to read**)
- **No audible announcement**
- Handrail available



Glass lift

ENTRANCE AND INTERIOR AREA

- Step-free main entrance
- Electronic glass door, clear door width 120 cm
- Chairs and tables movable
- Table top lower edge **66 cm** high (standard 70 cm), upper edge **68.5 cm**, depth to centre table leg 26 cm
- Some tables and large table lower edge **69 cm** high, upper edge 72 cm
- Centre table legs with cruciform base
- Table tops 60 x 60 cm, mostly 2 tables pushed together
- Counter height 120 cm
- Partly **pile carpet**



Interior area



Entrance



Interior area

DISABLED TOILET

- Disabled WC is also ladies toilet
- Length approx. 200 cm, width approx. 150 cm (oval shape)
- Single-hinged door with **recessed handle**
- Clear door width 90 cm
- **Turning circle smaller than 150 cm**
- WC height 47 cm
- WC accessible from the right, on this side **70 cm space**
- Folding support rail on the right at a height of 73 cm
- Vertical handrails on the left at a height of 75 cm
- Paper reachable when sitting
- Washbasin at a height of 84 cm, **no under-basin wheelchair access**, tap (with sensor) 35 cm away from the front edge of the washbasin
- Soap dispenser **at a height of 120 cm** above the washbasin, **approx. 40 cm from the front edge of the washbasin**
- Toilet interior completely **mirrored**



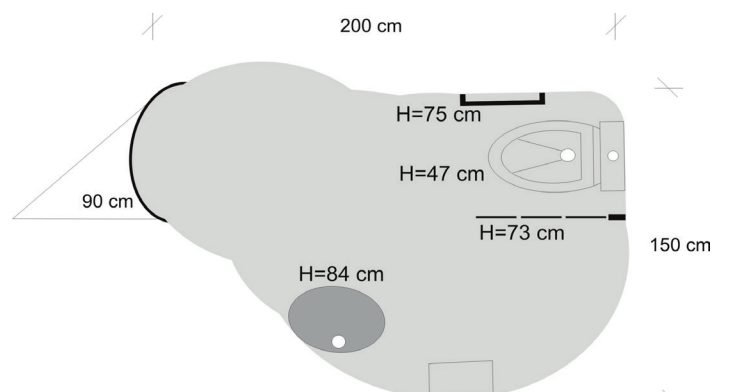
Washbasin in the WC



WC



WC



OUTDOOR DINING AREA

- Amphitheatre in front of the café
- Only a few moving tables and chairs, otherwise fixed benches and tables
- Lower edge of table 74 cm, upper edge 75 cm in height
- Diameter of table top 79 cm
- Centre table leg with cruciform base



Outdoor dining area

ADDITIONAL INFO

- Guide dogs allowed
- Non-glare lighting